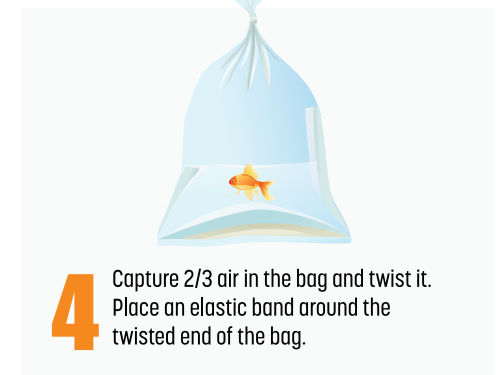
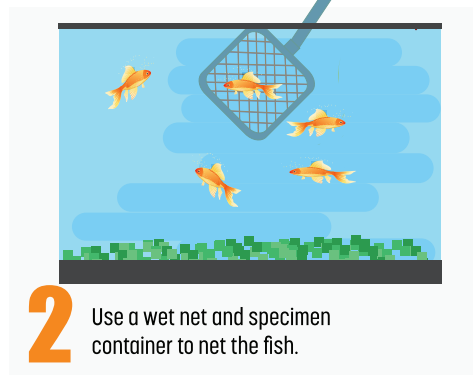
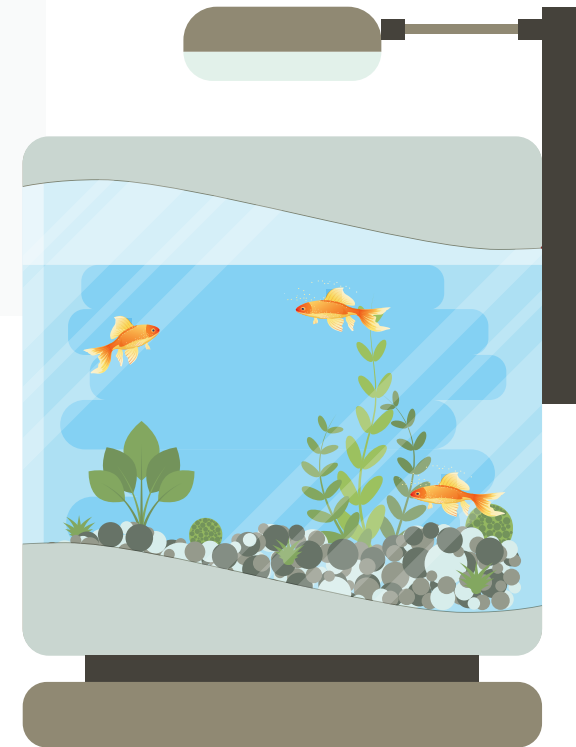
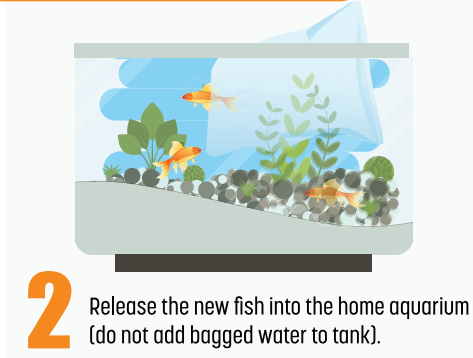


METHOD TO BAGGING & TRANSPORTING FISH FROM STORE TO HOME AQUARIUM

TIPS FOR BAGGING FISH



TIPS FOR TRANSPORTING FISH FROM STORE TO HOME AQUARIUM



What causes stress?

The transfer of the new fish challenges their immune system and reduces their slime coat as does entering a new environment. Any existing fish in the home aquarium may investigate the fish and nip at them. The new fish will need to adjust to their surroundings and fellow tank mates. All of these items can cause stress to the fish.

How to help with stress?

Adding STRESS COAT helps to resolve these issues, healing any damaged tissue during transport or introduction, reinforces their slime coat, and reduces fish stress by up to 40%. The advantages of STRESS COAT have been scientifically proven. Find more information on our website: www.apifishcare.com/product/stress-coat.